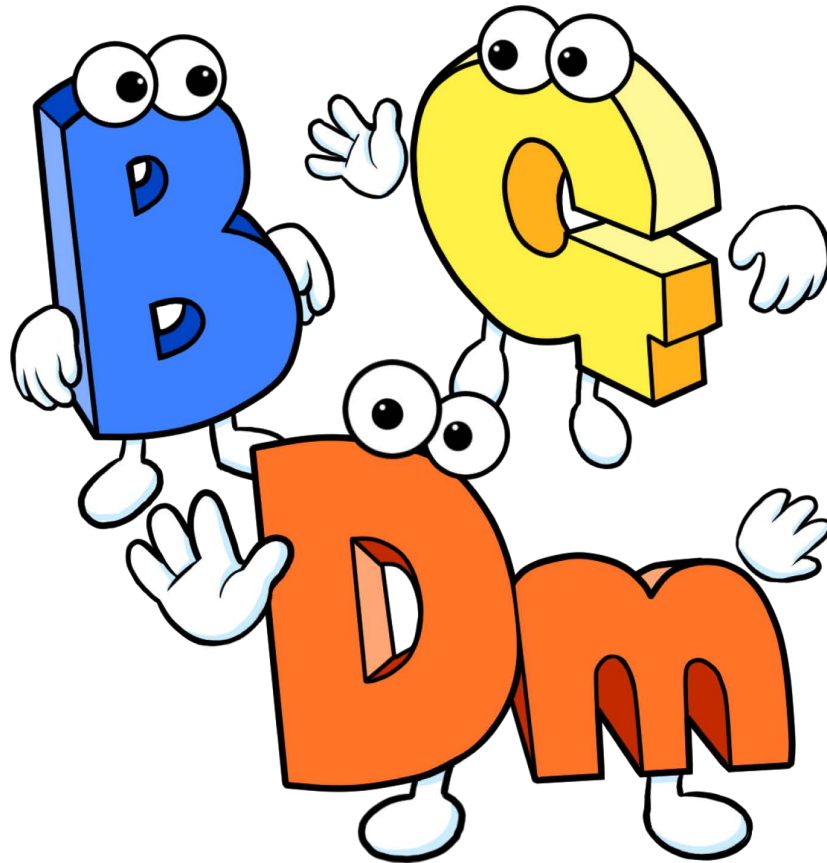




# Homeschool Music Curriculum Guitar for All Grade Levels



---

## Chord Fingerings Booklet

---

# Table of Contents

About this Booklet .....	1
--------------------------	---

Easy Chord Fingerings.....	2
----------------------------	---

A, A7, Am .....	2
-----------------	---

B7, C, C7 .....	3
-----------------	---

D, D7, Dm .....	4
-----------------	---

E7, E7, Em .....	5
------------------	---

F, G, G7.....	6
---------------	---

Regular Chord Fingerings.....	7
-------------------------------	---

A, A7, Am .....	7
-----------------	---

B7, C, C7 .....	8
-----------------	---

D, D7, Dm .....	9
-----------------	---

E, E7, Em .....	10
-----------------	----

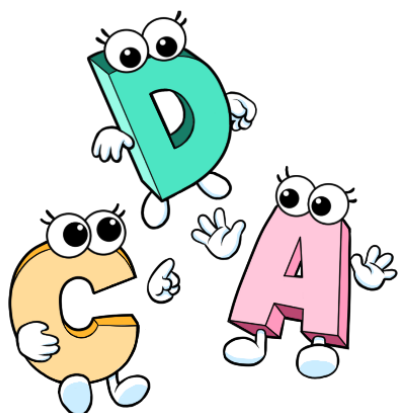
F, G, G7.....	11
---------------	----

Regular Chord Diagrams .....	12
------------------------------	----

# About this Booklet

This booklet provides fingerings for the chords used in the MME method. You'll find it extremely useful when learning new chords, and it can always be used to help remember any chord that has been forgotten.

There are two types of chords with the MME method: **Easy Chords** and **Regular Chords**.

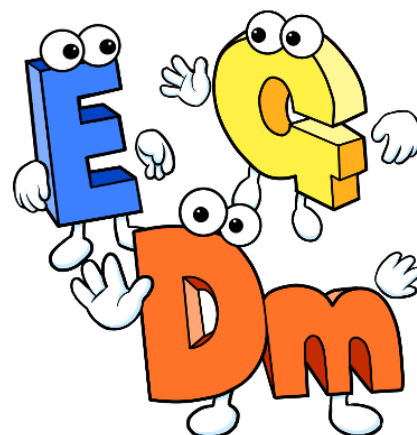


## Easy Chords..... Pg 2 - 6

**Easy Chords** are recommended for children ages 4-9 (as well as for older students who struggle with regular sized chords). Students can use these “kid-sized” chord shapes with MME chord activities for as long as necessary.

## Regular Chords.....Pg 7 - 11

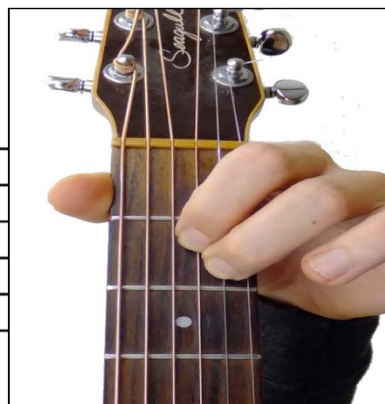
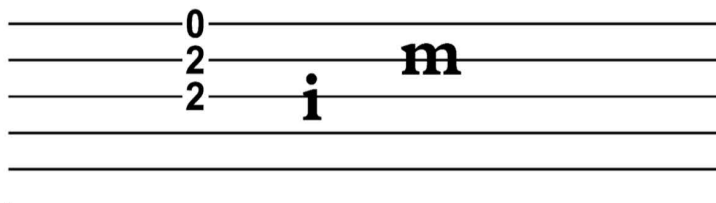
**Regular Chords** can usually be learned by children ages 10 and up. By this time, most kids' hands are big enough to form full sized chord shapes. However, older students with smaller hands can always start off with Easy Chords instead.



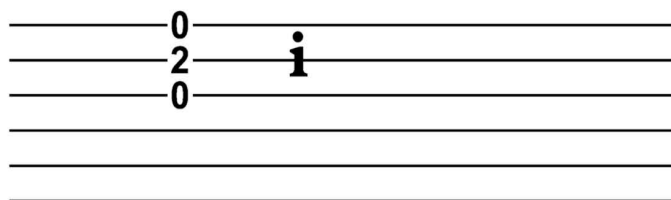
i = index  
m = middle  
r = ring  
p = pinky

# Easy Chord Fingerings

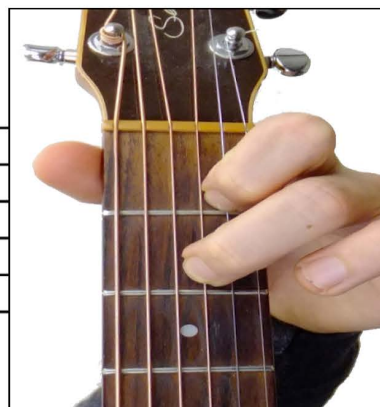
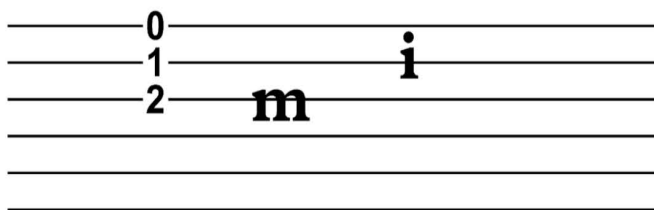
A



A7

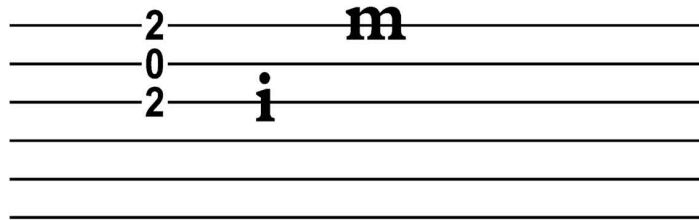


A<sup>m</sup>

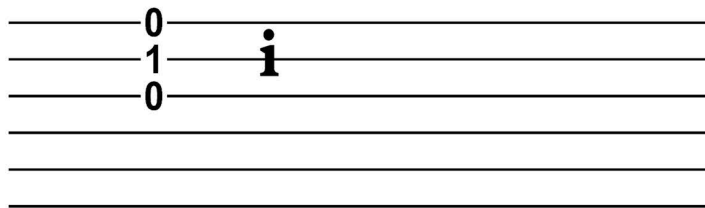


# Easy Chord Fingering Sheet

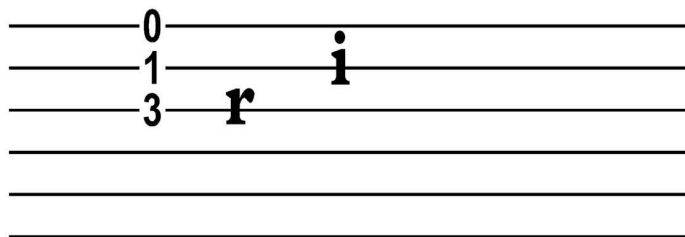
B7



C

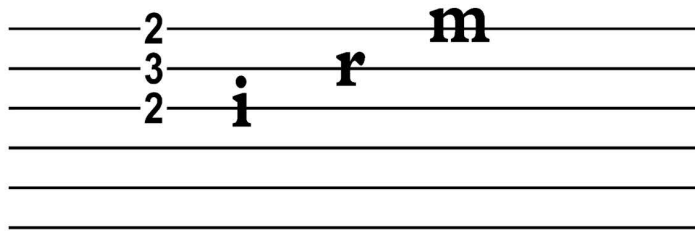


C7

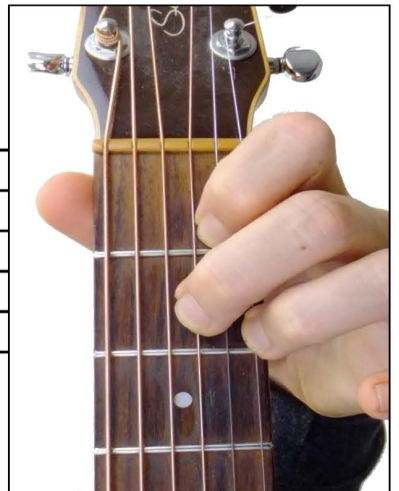
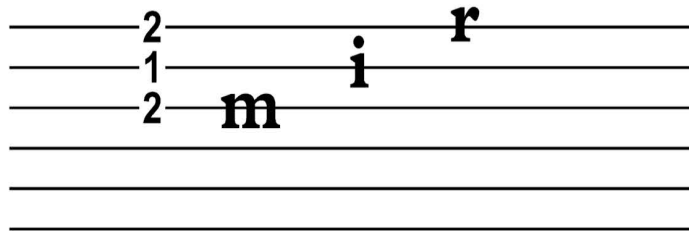


# Easy Chord Fingering Sheet

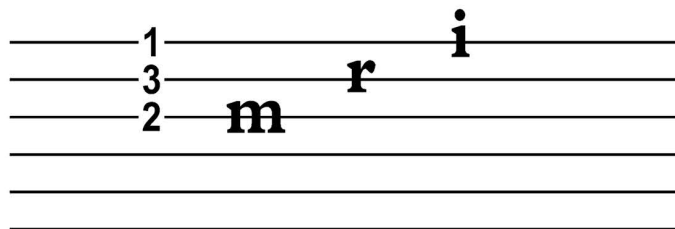
D



D7



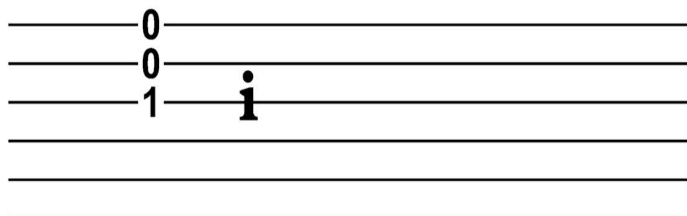
Dm



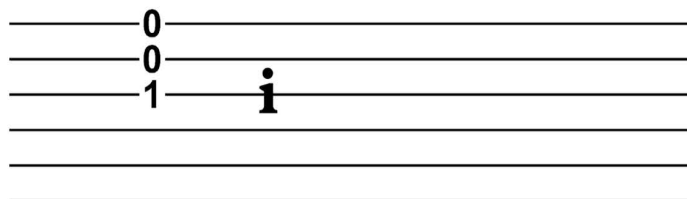


# Easy Chord Fingering Sheet

E



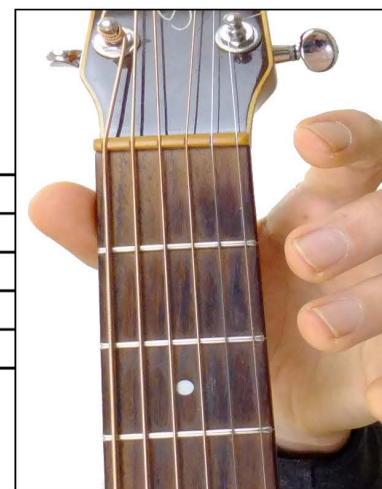
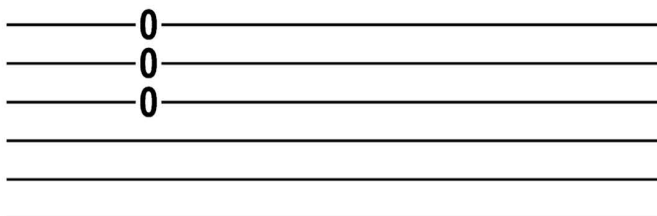
E7



\*Note: Easy E7 has the same shape as the Easy E chord

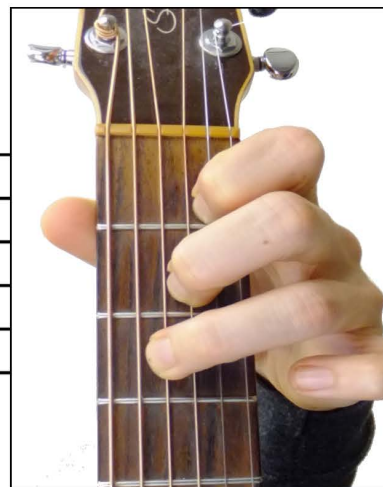
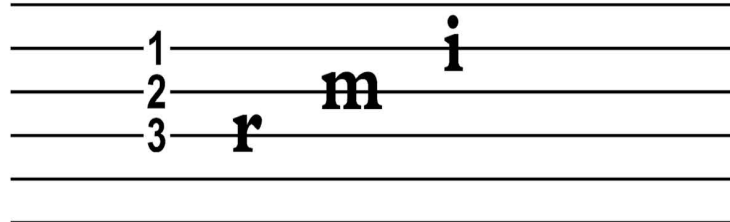


Em

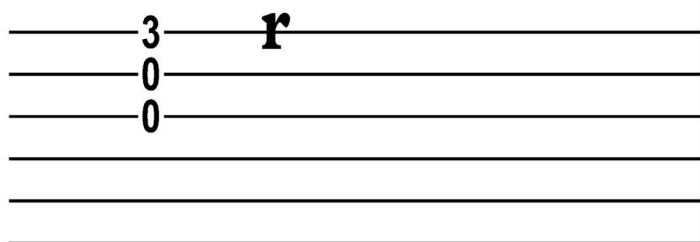


# Easy Chord Fingering Sheet

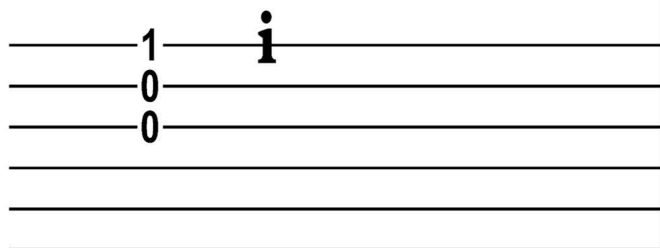
F



G



G7

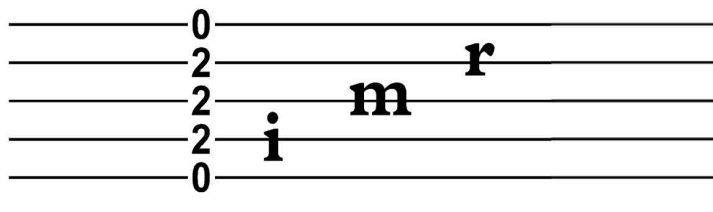




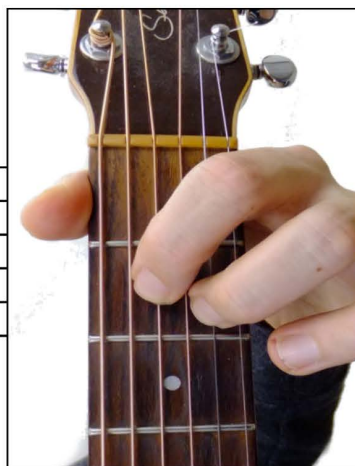
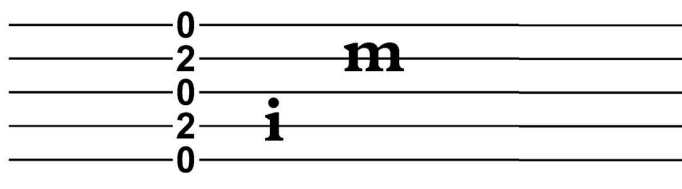
i = index  
m = middle  
r = ring  
p = pinky

# Regular Chord Fingerings

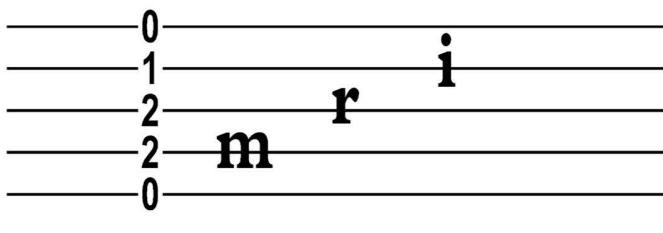
A



A7

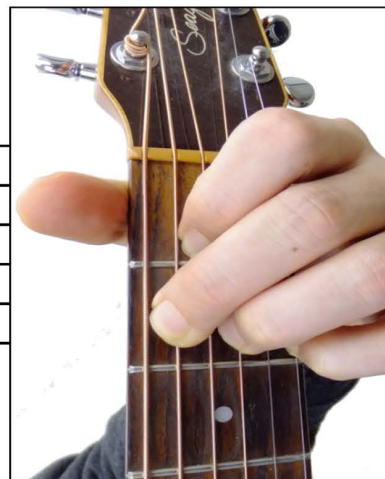
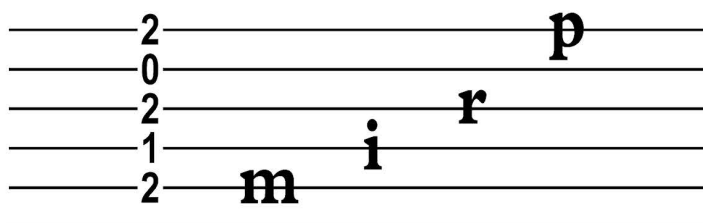


A<sup>m</sup>

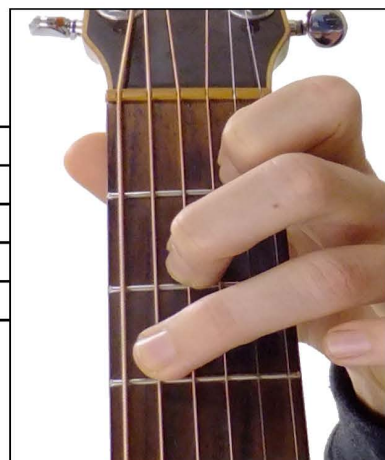
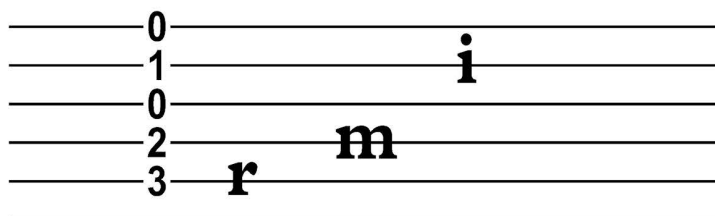


## Regular Chord Fingerings

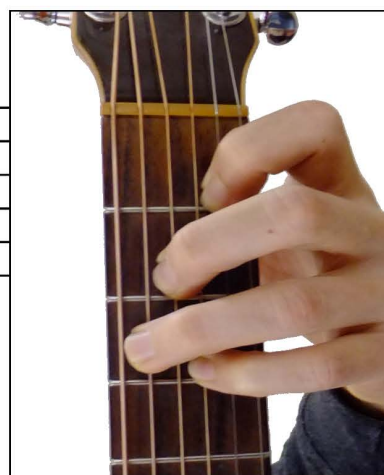
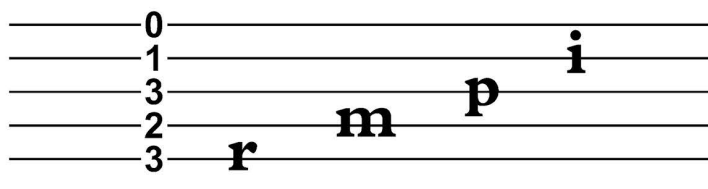
B7



C

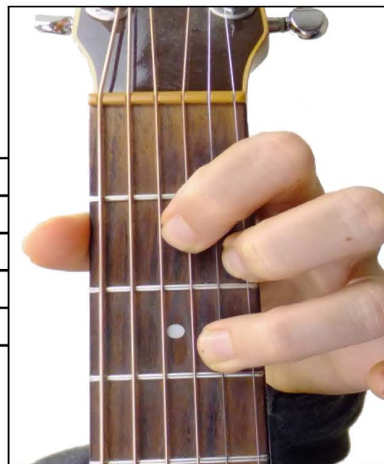
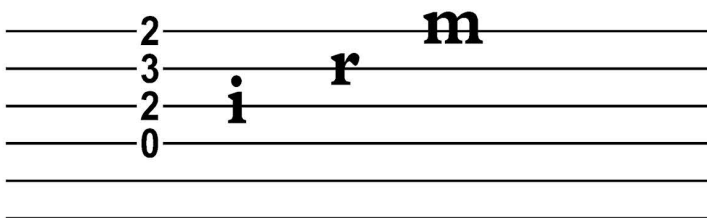


C7

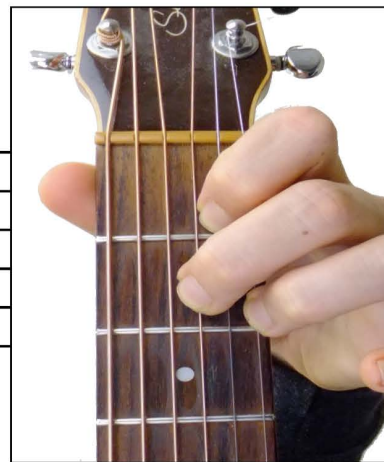
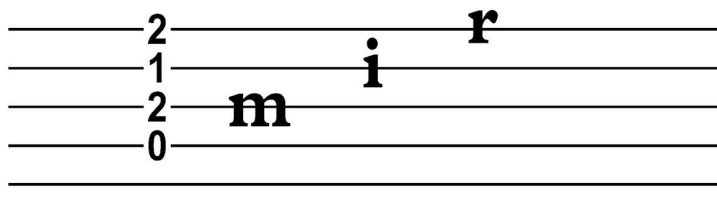


## Regular Chord Fingerings

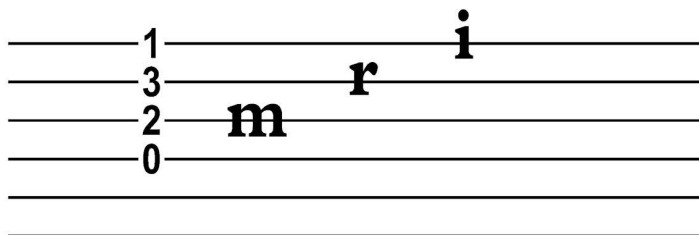
D



D7

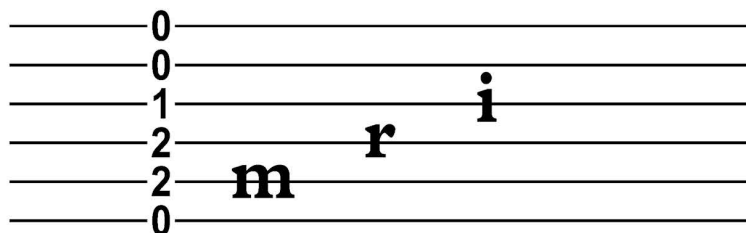


Dm

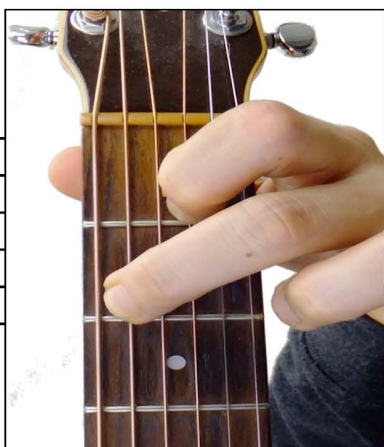
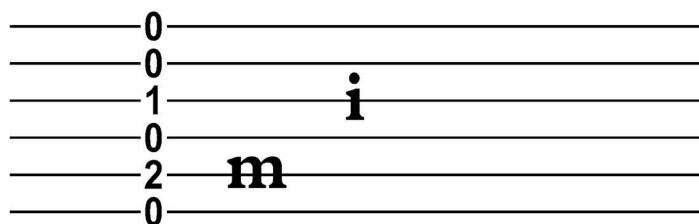


## Regular Chord Fingerings

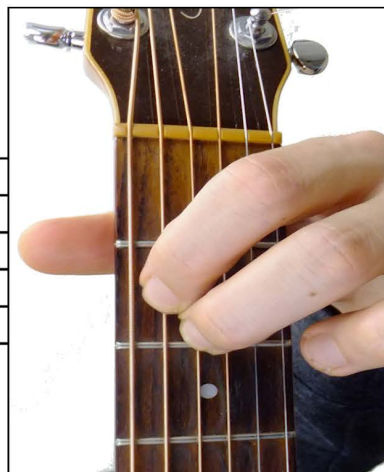
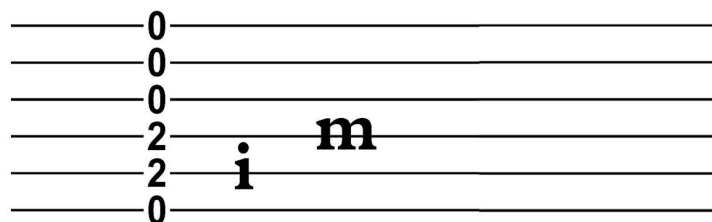
E



E7

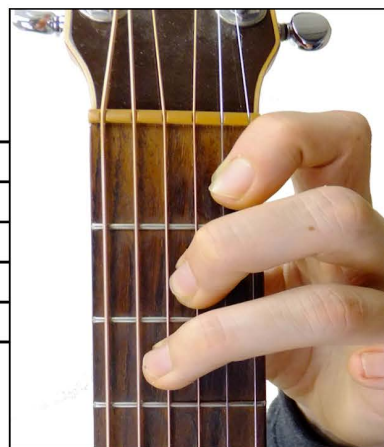
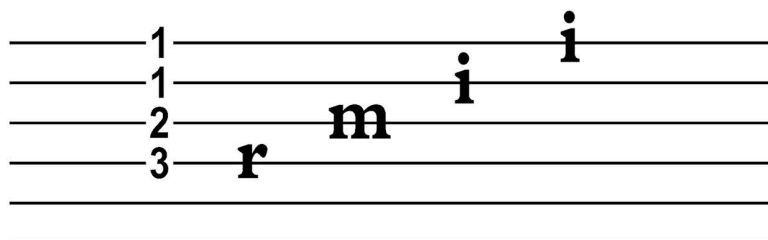


Em

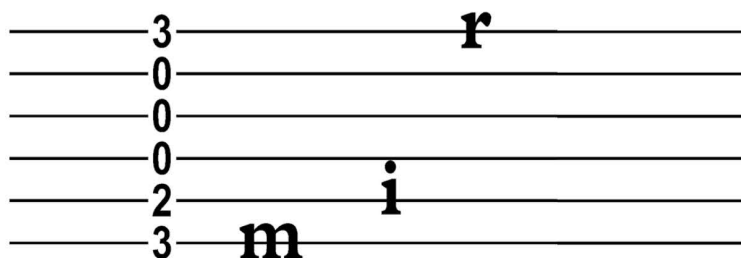


# Regular Chord Fingerings

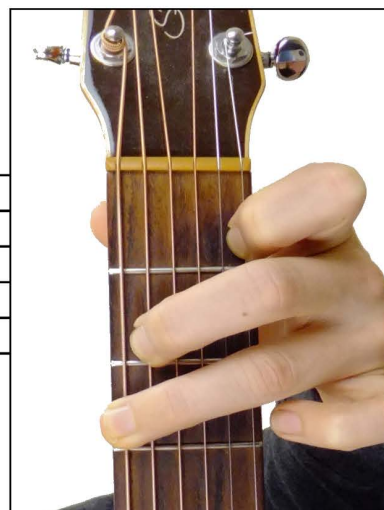
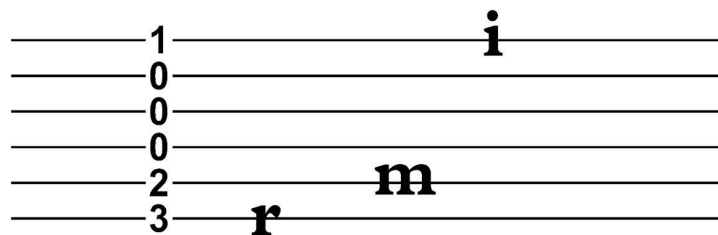
F



G



G7



# MME Chord Fingering Diagrams

